





## REPORT SUMMARY

**Result:**

PASS





10000 pcs+(3pcs golden sample) of TI LM2903QDRQ1 were received for packing check, Tape Direction judgment, Label judgment and marking content judgment .including 2 piece was used for dimension measurement, Scrape test and marking permanency Test.

The packing is in good order and in accordance with the order requirements. The placement direction of the chip in the tape, is consistent with the direction of PIN 1 specified in the datasheet information. The logo, content, font and format on the label meet the requirements of the manufacturer. Marking content is consistent with the requirements of the datasheet and labels. Feedstock passed Scrape Test and Marking Permanency Test. Dimensions A and B were measured and were within manufacturer specifications. The devices have the same exterior configuration as shown on the Package Outline Drawing and is consistent with the golden sample.

The incoming materials are original and unused.

### Feedstock Message

Quantity	10000+3pcs golden sample	Date code:	2219+2232 golden sample
Lot Code:	N/A	C00:	MEXICO
Package:	REEL	Pb Free:	YES
ROHS Type:	YES	Halogen Free:	N/A
MSL Level:	1	Vacuum Sealed:	N/A
desiccant:	N/A	HIC:	N/A

Packaging Check:	Result	PASS
<p>Correct brand, part number and quantity .The appearance of the Tape&amp;Ree Good appearance complete, its production date is reasonable.</p>		
		
Parts as arrived		Outer packaging top
		
Outer packaging bottom		Outer packaging label





Reel top



Reel label



Reel bottom



Tape seal



Tape top



Tape bottom



Golden sample label



Golden sample label



Reel cut







Reel cut top

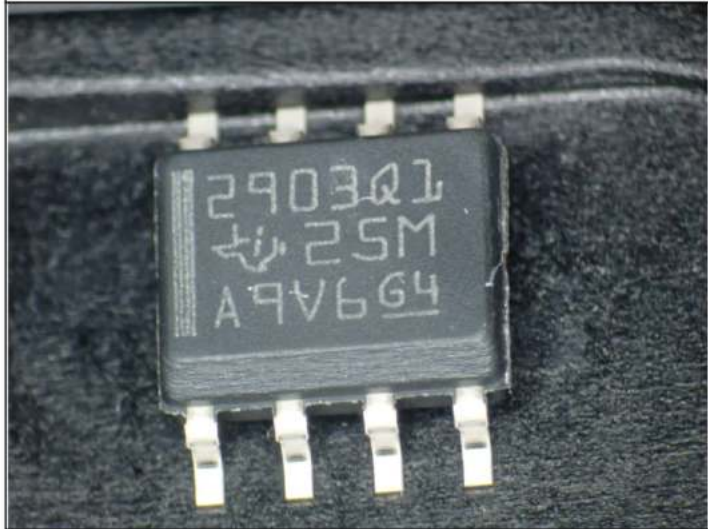
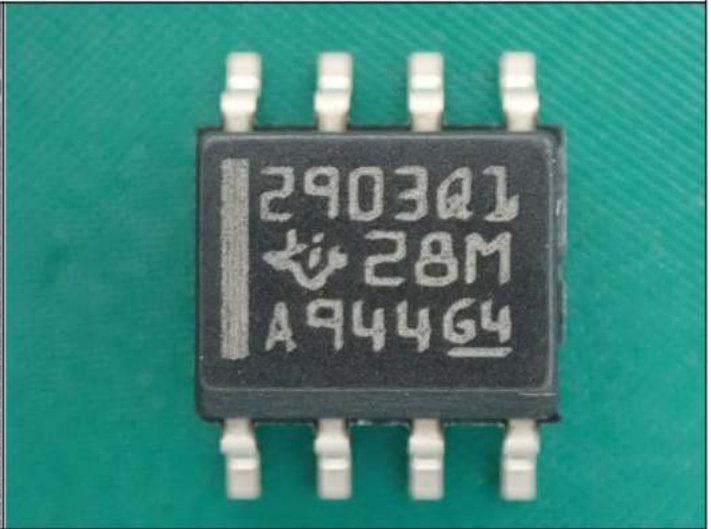
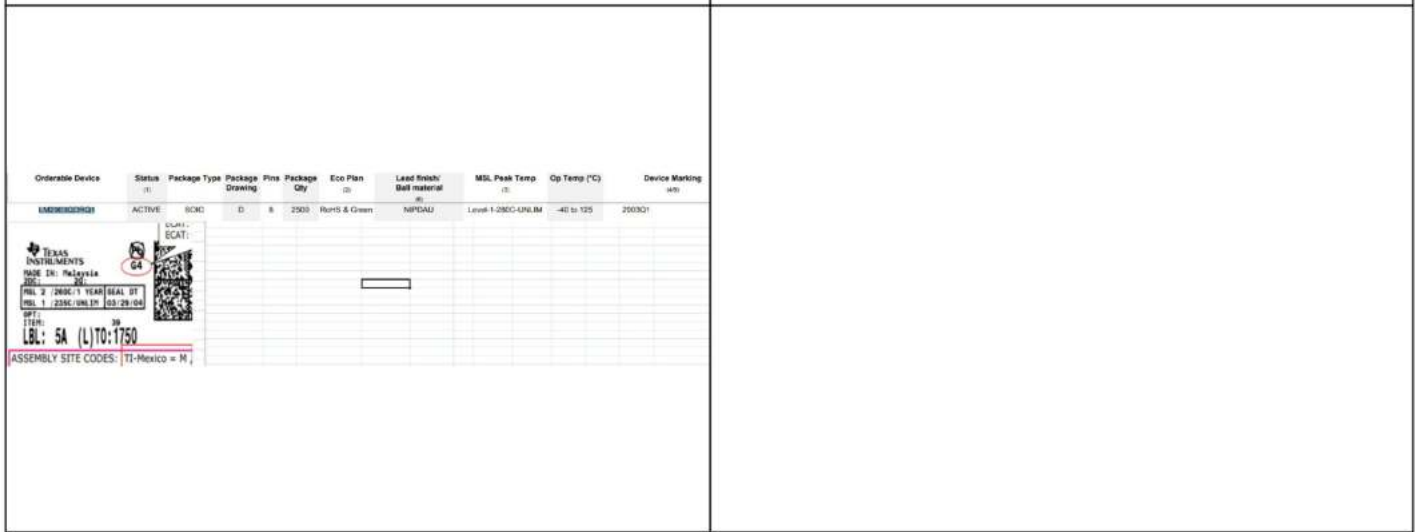


Reel cut bottom



Tape Direction Judgment:	Result	PASS
<p>The reel is neat and firm ,and the placement direction of the chip in the tape, is consistent with the direction of PIN 1 specified in the datasheet message and is consistent with the golden samplereel and thin film.</p>		
		
Parts as arrived tape	Golden sample tape	
		
Parts as arrived tape	Golden sample tape	

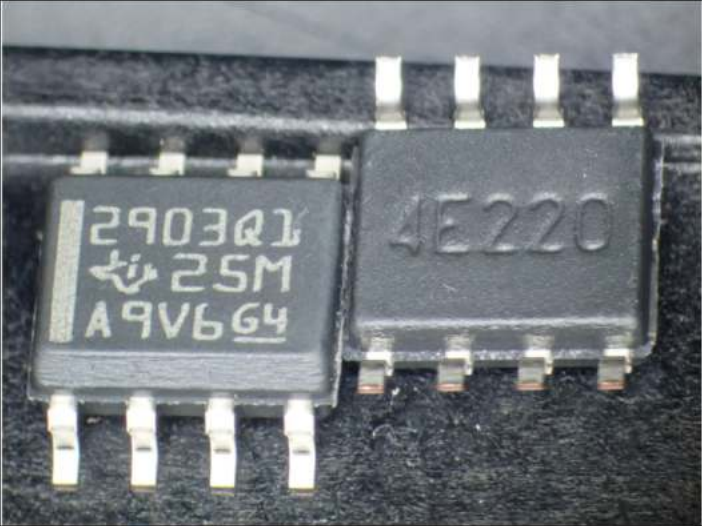
<table border="1"> <thead> <tr> <th>Device</th> <th>Package Type</th> <th>Package Drawing</th> <th>Pins</th> <th>SPQ</th> <th>Reel Diameter (mm)</th> <th>Reel Width (mm)</th> <th>AG (mm)</th> <th>B0 (mm)</th> <th>K0 (mm)</th> <th>P1 (mm)</th> <th>W (mm)</th> <th>Pin1 Quadrant</th> </tr> </thead> <tbody> <tr> <td>LM2903QDRQ1</td> <td>SOIC</td> <td>D</td> <td>8</td> <td>2500</td> <td>330.0</td> <td>12.4</td> <td>6.4</td> <td>5.2</td> <td>2.1</td> <td>8.0</td> <td>12.0</td> <td>Q1</td> </tr> </tbody> </table> <p>QUADRANT ASSIGNMENTS FOR PIN 1 ORIENTATION IN TAPE</p>		Device	Package Type	Package Drawing	Pins	SPQ	Reel Diameter (mm)	Reel Width (mm)	AG (mm)	B0 (mm)	K0 (mm)	P1 (mm)	W (mm)	Pin1 Quadrant	LM2903QDRQ1	SOIC	D	8	2500	330.0	12.4	6.4	5.2	2.1	8.0	12.0	Q1		
Device	Package Type	Package Drawing	Pins	SPQ	Reel Diameter (mm)	Reel Width (mm)	AG (mm)	B0 (mm)	K0 (mm)	P1 (mm)	W (mm)	Pin1 Quadrant																	
LM2903QDRQ1	SOIC	D	8	2500	330.0	12.4	6.4	5.2	2.1	8.0	12.0	Q1																	
Datasheet information																													
<b>Label Judgment:</b>	Result	PASS																											
The logo, content, font and format on the label meet the requirements of the origin manufacturer and is consistent with the History database reference label.																													
Parts as arrived Label		History database reference																											

Marking Content Judgment:	Result	PASS
<p>Marking content (LOGO, PN,D/C, etc).is consistent with the requirements of the datasheet and labels.the format (number of rows, arrangementfont,etc), is consistent with the golden sample.</p>		
		
Parts as arrived	Golden sample	
		
<p>Datasheet and Manufacturer information</p>		

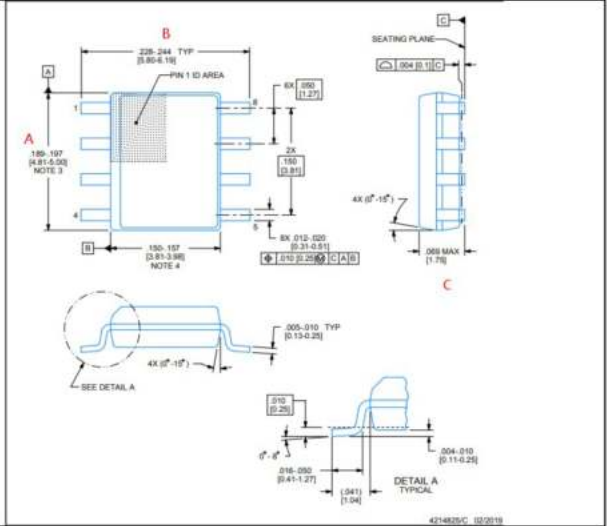


<b>Outline Dimensions:</b>	Result	PASS
----------------------------	--------	------

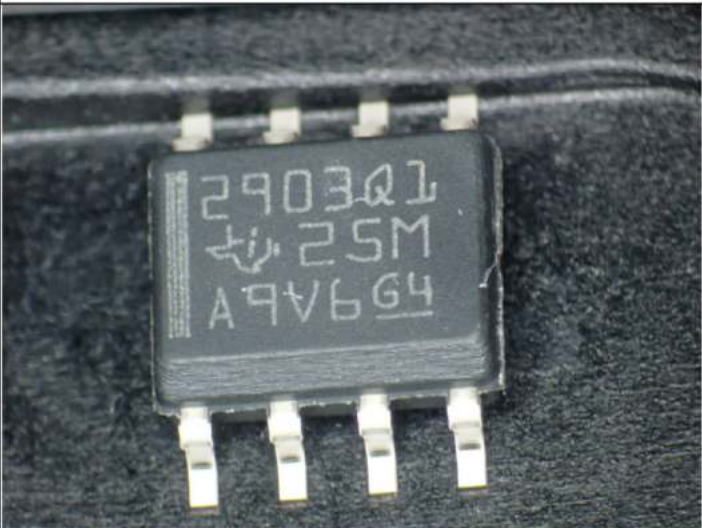
Pin color and shape normal the package shape is consistent with the datasheet and the pins are coplanar. No scratches or pinholes on the surface, no damage to the resin. the edge of the package is arc-shaped and there is chamfer. the external dimensions are consistent with the product package outline drawing. is consistent with the golden sample.



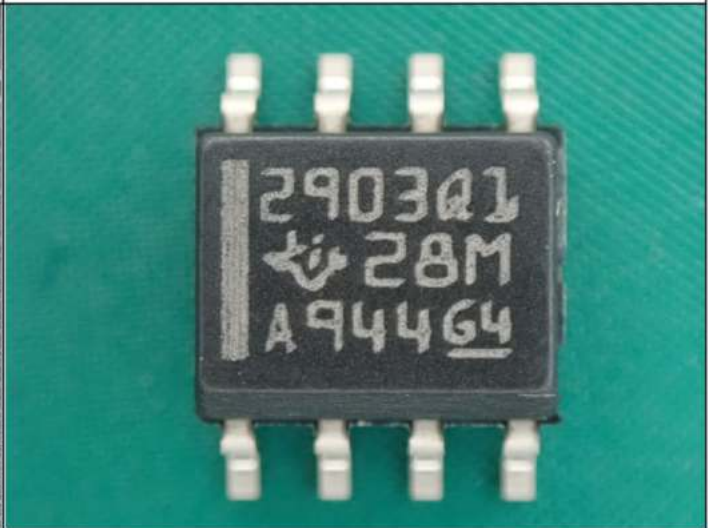
Parts as arrived



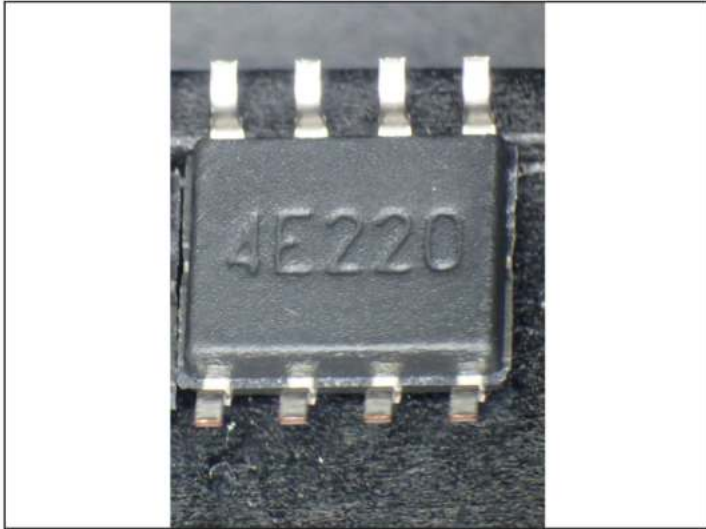
package outline drawing



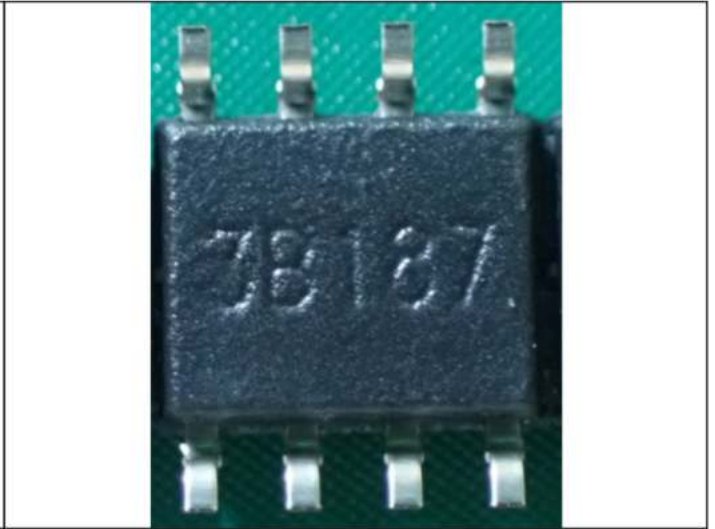
Parts as arrived top



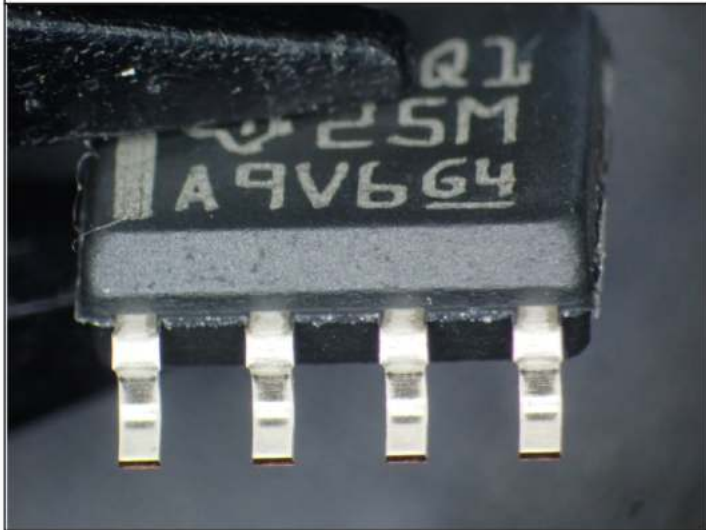
Golden sample top



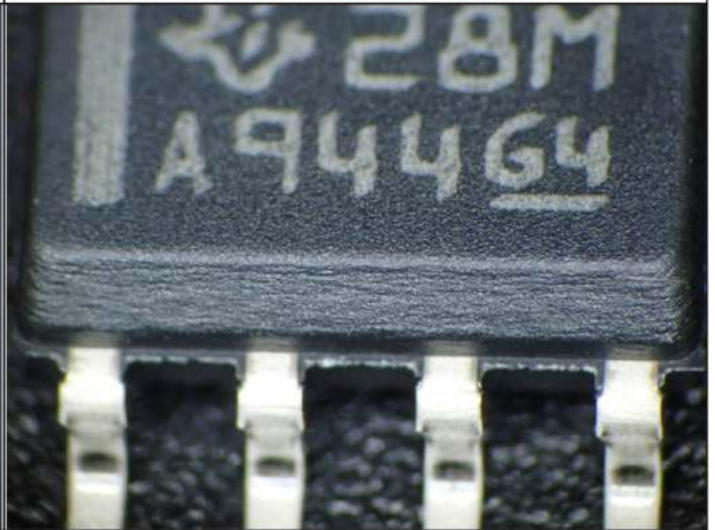
Parts as arrived Bottom



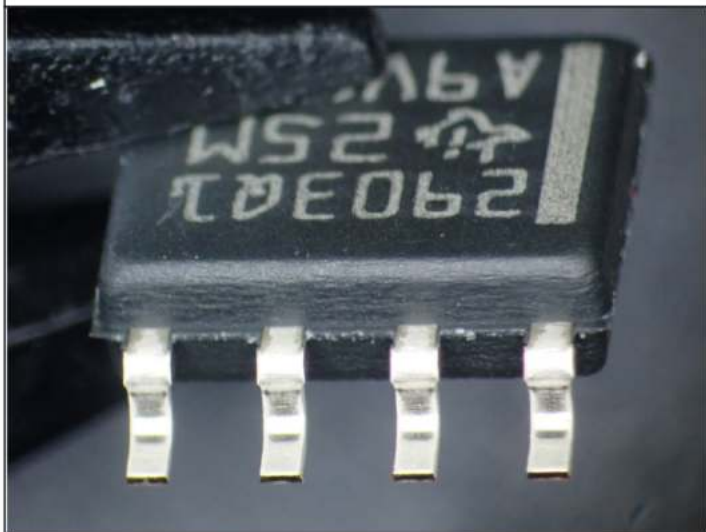
Golden sample Bottom



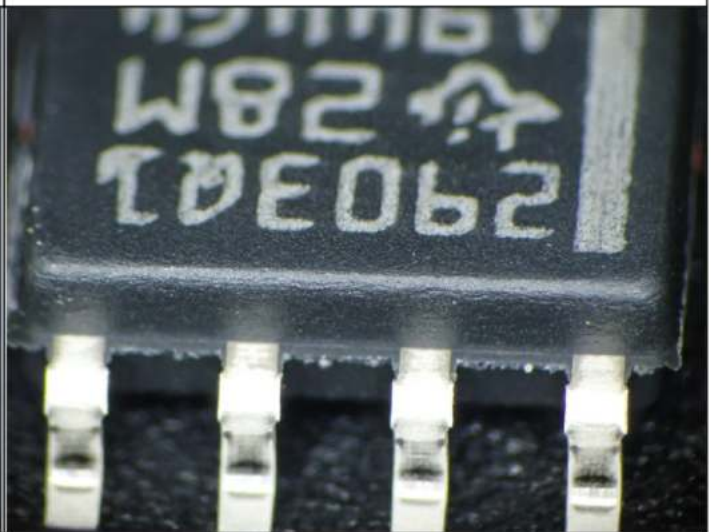
Parts as arrived side view



Golden sample side view

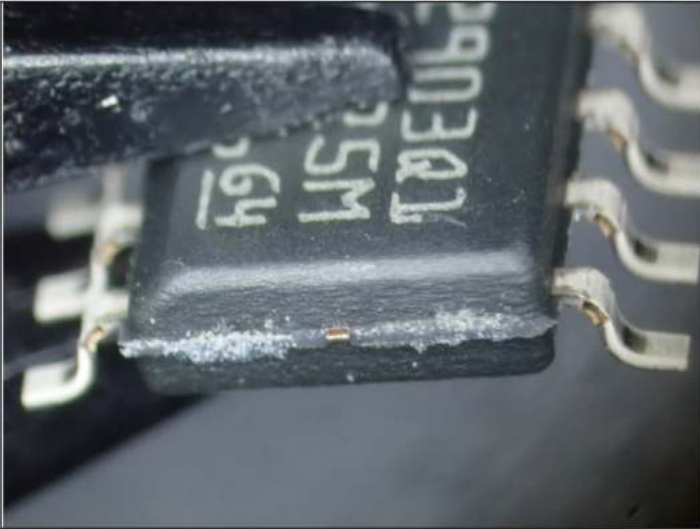


Parts as arrived side view



Golden sample side view

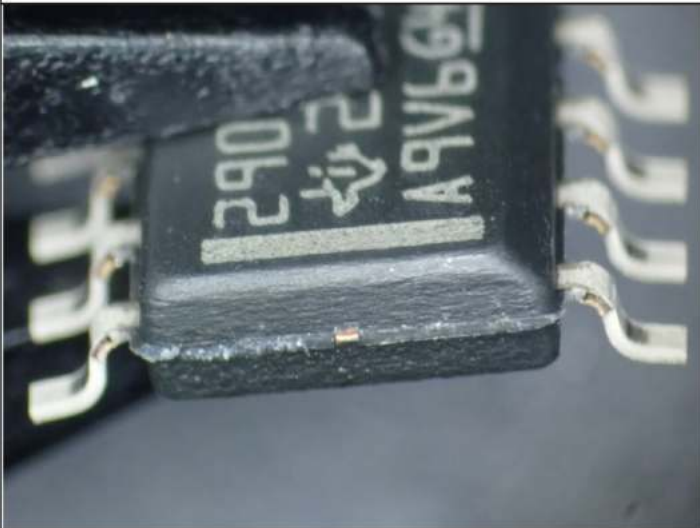




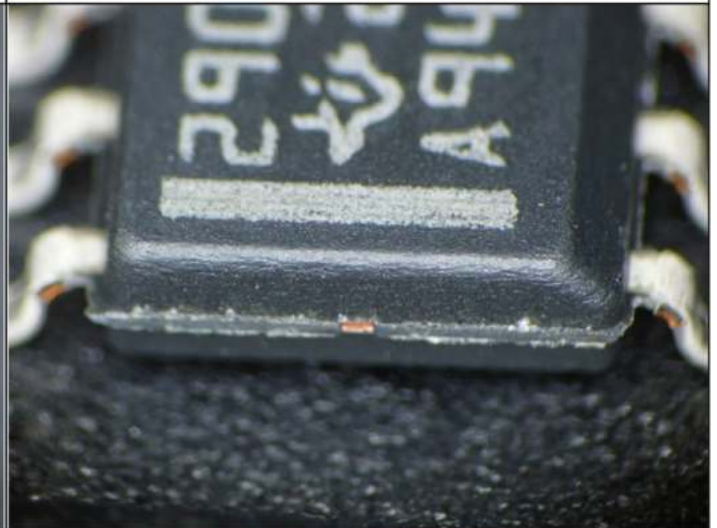
Parts as arrived side view



Golden sample side view



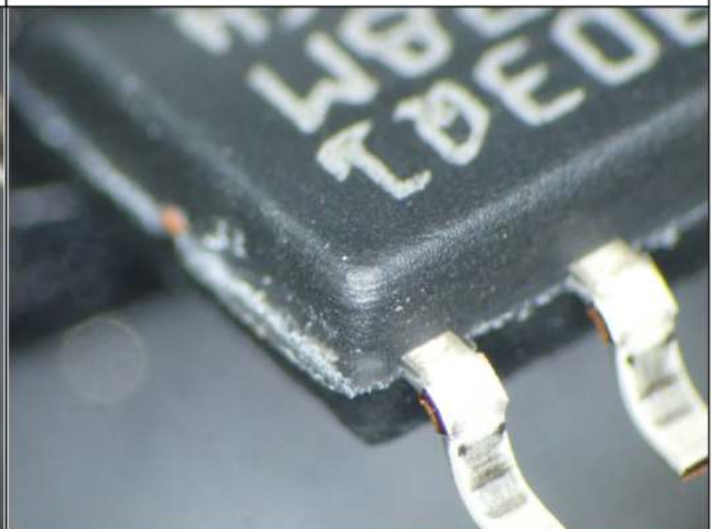
Parts as arrived side view



Golden sample side view

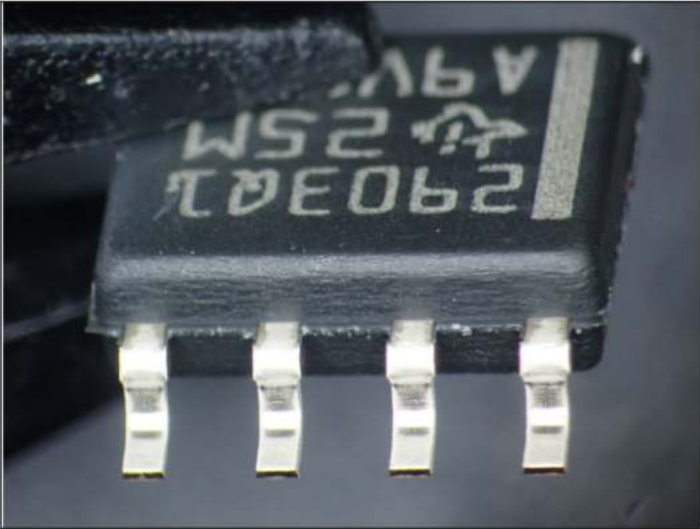


Parts as arrived Chamfer

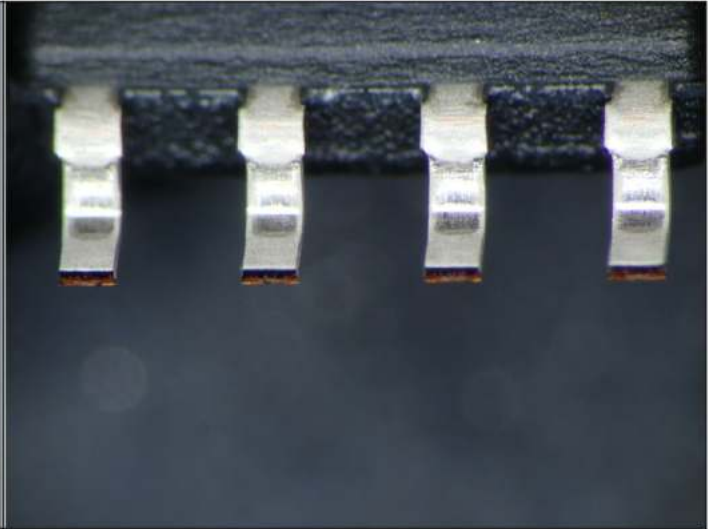


Golden sample Chamfer

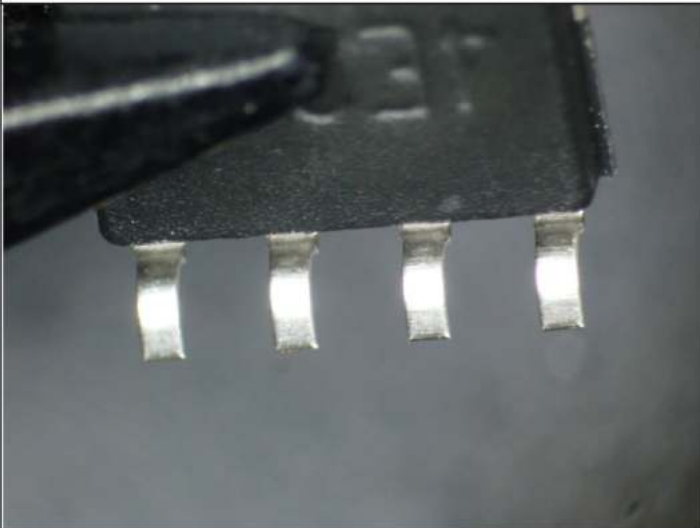




Parts as arrived pin



Golden sample pin



Parts as arrived pin



Golden sample pin



Parts as arrived: A=4.98mm (PASS)



Golden sample: A=4.88mm (PASS)



Parts as arrived: B=6.07mm (PASS)



Golden sample: B=6.03mm (PASS)



Parts as arrived: C=1.47mm (PASS)

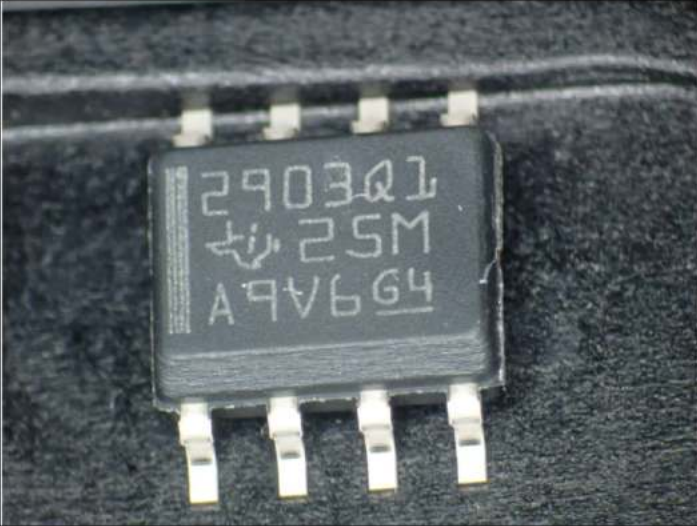


Golden sample: C=1.48mm (PASS)

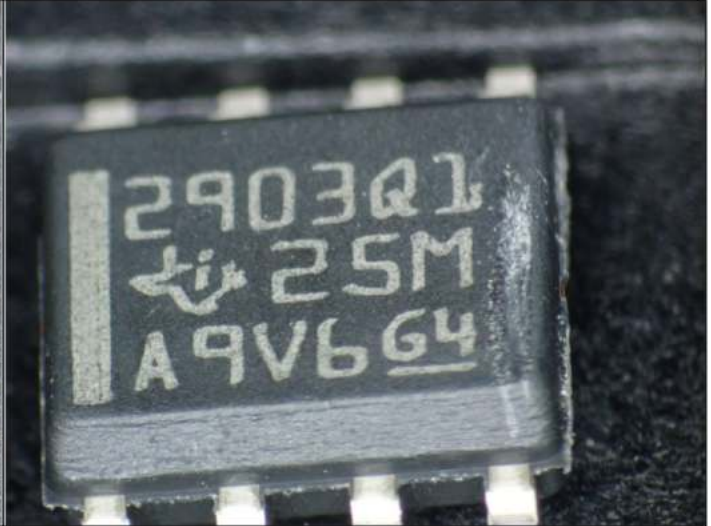


Scrape Test:	Result	PASS
--------------	--------	------

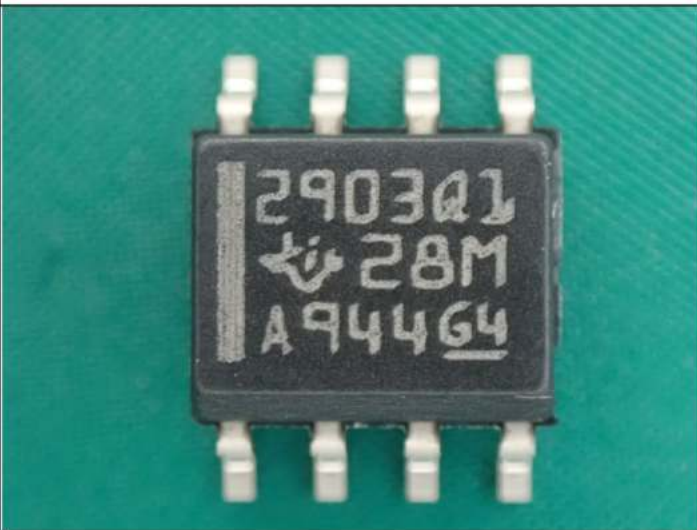
The scraped substance with a spatula is in the form of an off-white powder.



Parts as arrived:Before Scrape Test



After Scrape Test (Pass)

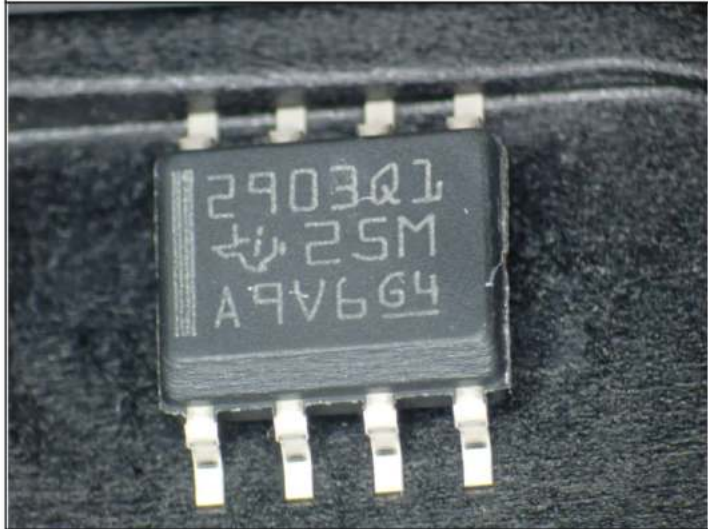

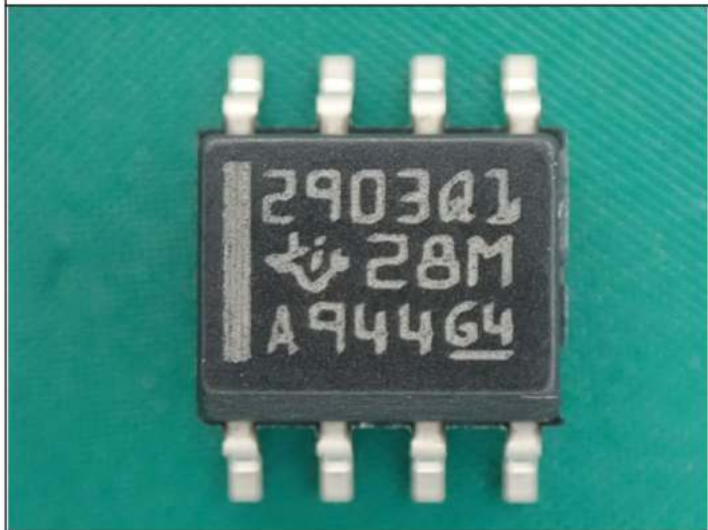



Golden sample:Before Scrape Test



After Scrape Test (Pass)



Marking Permanency Test:	Result	PASS
<p>Wipe with acetone, and observe that the surface of the product and the silk screen do not fade, and the cotton swab does not turn black.</p>		
		
Parts as arrived:Before Marking Permanency	After Marking Permanency Test (Pass)	
		
Golden sample:Before Marking Permanency Te	After Marking Permanency Test (Pass)	